

HONDA MONKEY125 TIS FULL SYSTEM STRAIGHT CYCLONE

Be sure to read the instruction carefully before starting the work. It is necessary to follow the contents to install Yoshimura product.



- ! CAUTION** Before beginning installation, let motorcycle cool down.
- ! CAUTION** Be sure not to damage each part during installation.
- ! CAUTION** Torque specification must be followed. If neglected, it may cause bolt and nut to fall off and damage to Yoshimura product and motorcycle.
- ! CAUTION** Titanium Blue sleeve is colored by anodizing. Handle with care as the color may change. When cleaning silencer, use soft cloth with dish soap but do not use metal polish or chemical cleaner.

1. Product Information :

Description	HONDA Monkey125 Street TIS Full System GP-MAGNUM Type Down			
Part Number	Straight Muffler	: 1T0A-400-5650	Cyclone Type	H400SST11
			Main Material	Stainless steel
			Weight [STD : 5.0kg]	Straight Muffler : 1.8kg

2. Applicable Model :

Model	Monkey125
-------	-----------

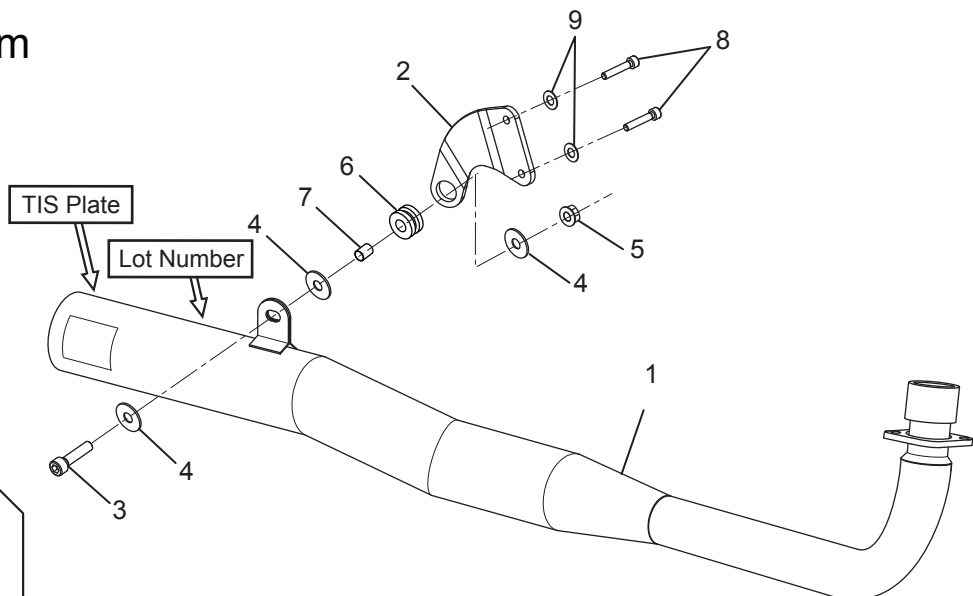
3. Contents:

No.	Descriptions	Part No.	Q'ty	No.	Descriptions	Part No.	Q'ty
1	Muffler Assy	1T7-400-5650	1	6	Grommet Rubber	553-565-0000	1
2	Muffler Bracket	161-400-0300	1	7	Grommet Spacer	850-208-1212	1
3	Cap Bolt M8x30	800-208-5030	1	8	Cap Bolt M6x25	800-206-4025	2
4	Washer M8x26	812-108-2600	3	9	Washer M6x13	812-206-1310	2
5	Flange Nut M8	823-008-1250	1	※	Spring Puller Tool	100-000-0000	1

4. Optional Part :

Description	Part No.
Side Cover	516-400-1100

Parts Diagram



Installation Procedure

- 1) Check that all the component parts are in hand.
- 2) According to HONDA service manual, remove stock exhaust system. (See Fig. 1)

CAUTION When removing stock exhaust system, be careful not to damage engine, swing arm or other components.

REFERENCE Stock nuts removed at this stage are reused when mounting Yoshimura exhaust system.

- 3) Install Grommet Rubber and Grommet Spacer on Exhaust Bracket. (See Fig 2)
- 4) Remove 2 of stock bolt which are mounting rear brake master cylinder, put Exhaust Bracket and mount them together with 2 of each Cap Bolt M6x25 and Washer M6. Tighten and torque Cap Bolt M6x25. (See Fig. 2 & 3)

Tightening Torque Cap Bolt M6x25 : 10Nm

CAUTION Torque specification must be followed.

- 5) Replace stock gasket at exhaust port of engine with new one. Then, mount Exhaust Assy at the exhaust port with stock nuts. Tighten nuts by hand only at this stage. (See Fig. 4 & 5)

CAUTION Use Honda genuine new exhaust gasket.

- 6) Mount Exhaust Assy on Exhaust Bracket with 2 of each Cap Bolt M8x30, Washer M8x26 and Flange Nut M8. Tighten Cap Bolts by hand only at this stage. (See. Fig. 6 & 7 on next page)
- 7) Check that there are proper clearances between Yoshimura exhaust system and other components. Then, tighten and torque nuts on Exhaust Assy and Button Bolt M8x30 on Exhaust Bracket in order. (See Fig. 8 on next page)

Tightening Torque Stock nut : 15Nm
Button Bolt M8x30 : 23Nm

CAUTION Torque specification must be followed.

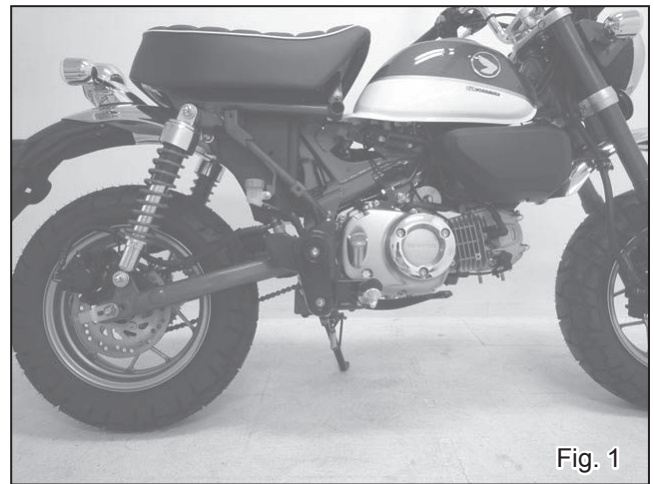


Fig. 1

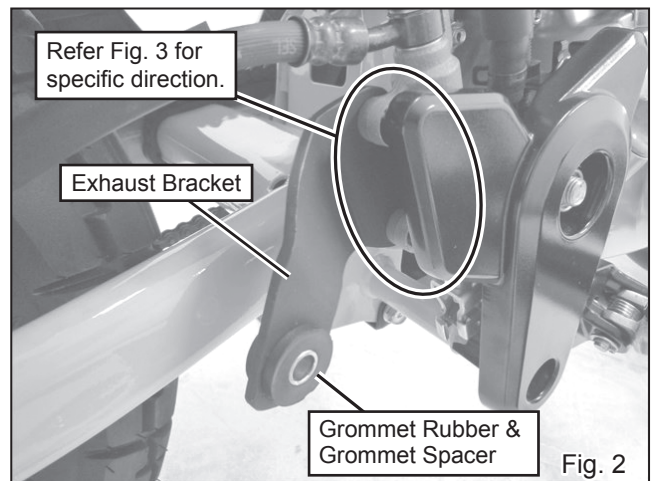


Fig. 2

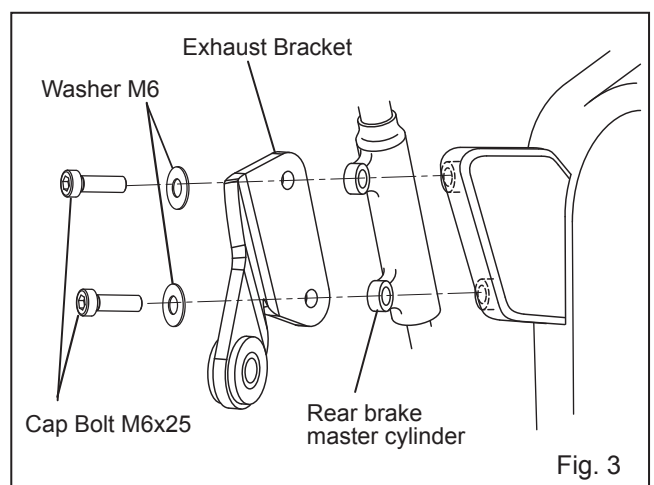


Fig. 3

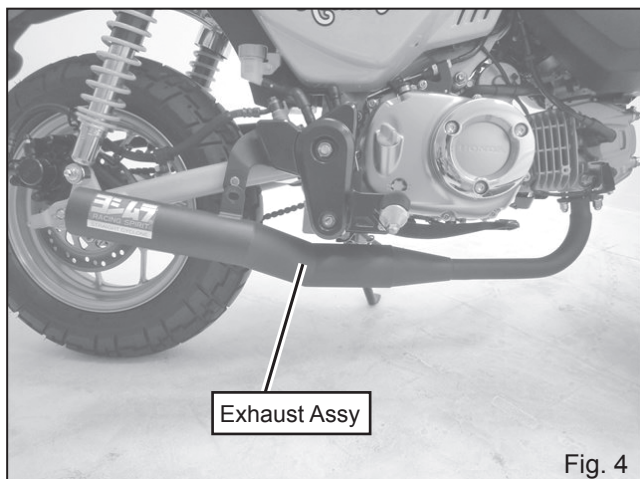


Fig. 4

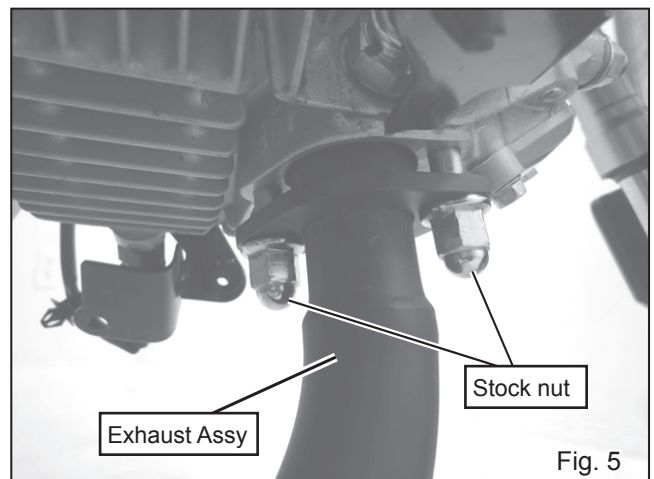


Fig. 5

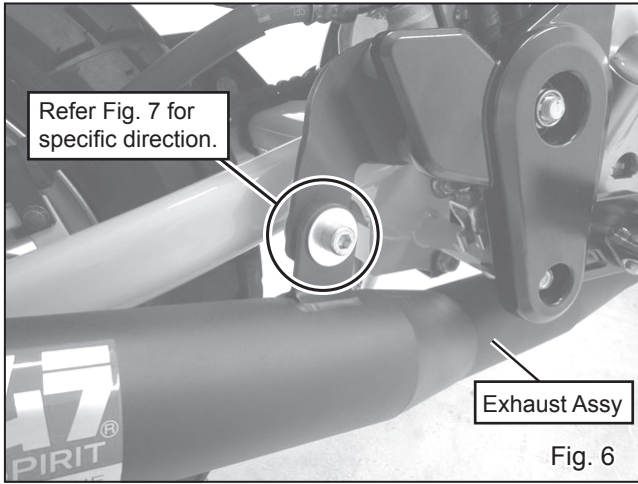


Fig. 6

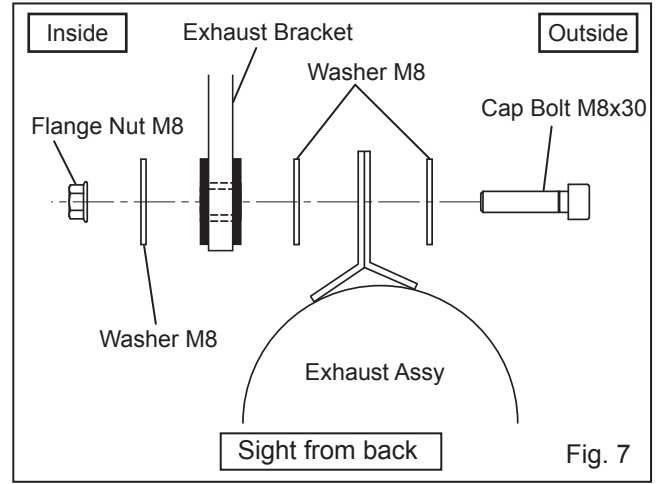


Fig. 7

8) It is recommended that whole Yoshimura exhaust system to be wiped down with dish soap to remove oil and fingerprints. This will prevent tarnishing of finish after the exhaust system is heated up.

CAUTION When cleaning silencer, use soft cloth with dish soap. Do not use metal polish or parts cleaner. If neglect, the paint Exhaust Assy may come off or get scratches.

9) Warm-up engine, and inspect the exhaust leakage. Tighten all bolts and nuts further after engine is cooled down.

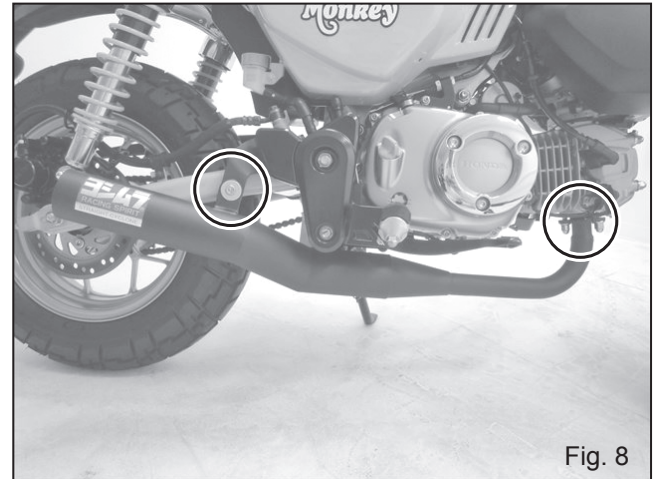


Fig. 8



After Installation

REFERENCE

Yoshimura Asia recommends silencer inner wool replacement every 5,000km (3,000miles) in order to get Yoshimura exhaust performance fully. Climate, riding condition, and frequency of ride are direct contributing factors for inner wool worn out. Keeping high engine revolution also promotes further wool consumption. For silencer repairing, please contact local Yoshimura distributor for further information.

- CAUTIONS AFTER INSTALLATION -

- ⊙ Check each bolt sometimes to see that there is no failure condition such as poor tightening.
- ⊙ Quality control is implemented on all products. If, however, any defect or failure is found, please notify Yoshimura Asia through the selling dealer. Necessary technical service or replacing of the product will be made.
- ⊙ Due to improvement, the specifications and price of the product are subject to change without notice.
- ⊙ For any information regarding this product, please address inquiries to Yoshimura Asia Co., Ltd.

Yoshimura Asia Co., Ltd.

118/3 Moo 18, KLONGNUENG, KLONGLUANG, PATHUMTHANI 12120, THAILAND

Web site: <http://www.yoshimura.asia>