

SUZUKI GSX-S1000 STREET SPORTS STAINLESS FULL SYSTEM R-11 SINGLE EXIT

Product information



Be sure to read the instruction carefully before starting the work. It is necessary to follow the contents to install Yoshimura product.

CAUTION Installation of this product is required rear suspension removal. Follow the procedures in Genuine service manual for the suspension removal and installation.

1. Product Information :

Description	SUZUKI GSX-S1000/F Street Sports Stainless Full System R-11 Single Exit			
Part Number	Stainless Sleeve (SS)	: 170-196-5F50	Cyclone Type	S196S11C2
	Metal Magic Sleeve (SM)	: 170-196-5F20	Main Material	Stainless steel
	Titanium Sleeve (ST)	: 170-196-5F80	Weight [STD : 10.4kg]	(SS) & (SM) : 6.3kg
	Titanium Blue Sleeve (STB)	: 170-196-5F80B		(ST) & (STB) : 6.1kg

2. Contents:

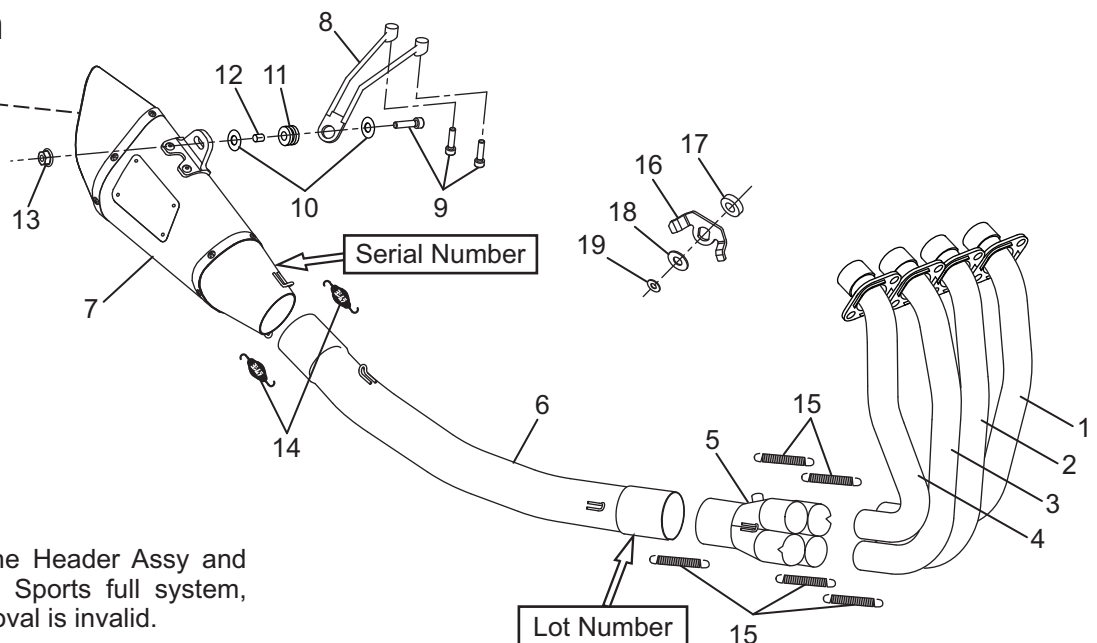
No.	Descriptions	Part No.	Q'ty	No.	Descriptions	Part No.	Q'ty
1	Exhaust Pipe #1	181-196-5F00	1	10	Washer M8x26	812-108-2600	2
2	Exhaust Pipe #2	182-196-5F00	1	11	Grommet Rubber	553-565-0000	1
3	Exhaust Pipe #3	183-196-5F00	1	12	Grommet Spacer	850-208-1212	1
4	Exhaust Pipe #4	184-196-5F00	1	13	Flange Nut M8	823-008-1250	1
5	Exhaust Collector	119-196-5000	1	14	Exhaust Spring (Short)	118-001-0000	2
6	Tailpipe	185-196-5F00	1	15	Exhaust Spring (Long)	118-000-1000	5
7	Silencer Assy, (SS)	1A6-196-5E50	1	16	Exhaust Control Valve Cancellor Bracket	148-984-0021	1
	Silencer Assy, (SM)	1A6-196-5E20		17	Aluminum Spacer 12-20-7	860-012-2007	1
	Silencer Assy, (ST)	1A6-196-5E80		18	Washer M12	812-512-1815	1
	Silencer Assy, (STB)	1A6-196-5E80B		19	Washer M5	812-205-1512	1
8	Silencer Bracket	161-196-0300	1	*	Spring Inner Tube	118-000-1100	5
9	Cap Bolt M8x30	800-208-5030	3				

3. Optional Part :

Description	Part No.
SILENCER BRACKET SET	194-196-0010

Parts Diagram

SD#98 (Pre-installed)
Parts No. : 138-138-4398



CAUTION

In combination with the Header Assy and Tailpipe of this Street Sports full system, the silencer EEC Approval is invalid.